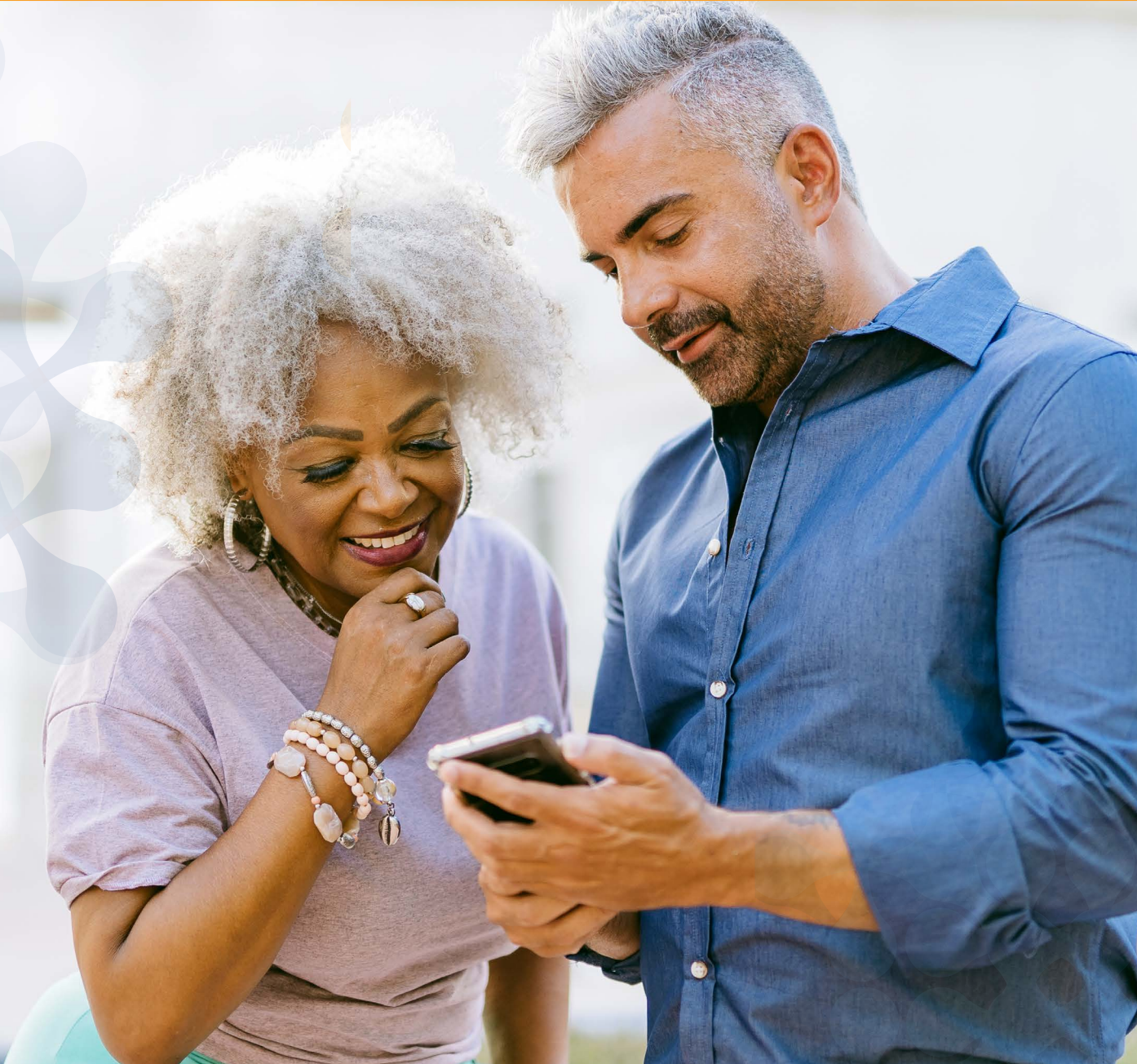




# Advantage Dollars Catalog 2023



*This catalog is a listing of products available from Convey only.  
Keep this catalog to reference each time you place an order.*





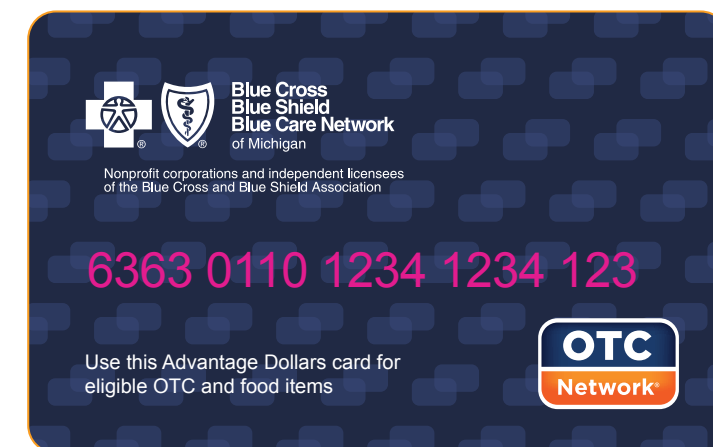
## Some order guidelines

Your Medicare Plus Blue<sup>SM</sup> PPO plan or BCN Advantage<sup>SM</sup> HMO-POS or HMO benefits include the Advantage Dollars card allowance that offers a **quarterly allowance to spend on over-the-counter (also known as OTC) and food items.\***

OTC items are drugs and health-related products that don't need a prescription, such as allergy and pain medicine, toothpaste, bandages and vitamins. You'll find OTC items available for purchase **in this catalog or in the online catalog at [www.MyBenefitsCenter.com](http://www.MyBenefitsCenter.com)**. Purchases can be made online, by phone or by mail using your Advantage Dollars allowance.

If you have any questions, call the Customer Service number on the back of your Blue Cross or BCN member ID card. You can also visit **[www.bcbsm.com/medicareotc](http://www.bcbsm.com/medicareotc)** for additional information.

Keep your Advantage Dollars card in your wallet. That way, it's always there when you want to make a purchase.



\*You will be notified by Blue Cross if you are eligible to purchase food items with your OTC allowance. To use the allowance for food, you must have been diagnosed with diabetes, chronic obstructive pulmonary disease, congestive heart failure, stroke, hypertension, coronary artery disease or rheumatoid arthritis.



## Four ways to use your card



### In store

Your Advantage Dollars OTC allowance can be used at participating retailers. To see a complete list of retailers, visit [www.MyBenefitsCenter.com](http://www.MyBenefitsCenter.com).



### Order online

To place your order online, go to [www.MyBenefitsCenter.com](http://www.MyBenefitsCenter.com).



### Order by phone

To place an order by phone through Convey, call **1-855-856-7878**, from 8 a.m. to 11 p.m. Eastern time, Monday through Friday. TTY users call **711**.



### Order by mail

To place an order by mail, send the order form at the back of this catalog to:  
**OTC Servicing Center, P.O. Box 526266, Miami, FL 33152-9819**

If the end of the benefit period is approaching and you don't think your order form will be received in time, order online or call Convey.

*Allow five to seven business days to receive your products.*

## Important information

- Your quarterly allowance is loaded **starting January 1, April 1, July 1 and October 1**. Unused amounts will carry forward into the next quarter and expire at the end of the calendar year.
- Your order total will be applied to the benefit period when the order is received.
- Returns aren't accepted due to the personal nature of these products.
- Catalog items occasionally change throughout the year. **For the most up-to-date listing of products available, go to [www.bcbsm.conveyotcsolutions.com](http://www.bcbsm.conveyotcsolutions.com).**
- To track your shipment, log into your account at [www.bcbsm.conveyotcsolutions.com](http://www.bcbsm.conveyotcsolutions.com).
- OTC products are intended for member use only to help with a health or medical need. Blue Cross prohibits the use of this benefit to order OTC items for family members and friends.





Please note that the prices shown in the following list do not include sales tax.

Item#	Product Description	Packaging	Strength	Price
<b>Allergy</b>				
1927	Benadryl Allergy Liqui-Gels Dye-Free	24 ct	25 mg	\$12.00
1090	Cetirizine HCL (Allergy Tablets)	14 ct	10 mg	\$7.75
2003	Cetirizine HCL (Allergy Tablets)	45 ct	10 mg	\$11.00
1008	Chlorpheniramine Maleate Antihistamine (Allergy Tablets)	100 ct	4 mg	\$8.75
2300	Claritin 24hr Tablet 10MG	10 ct	10 mg	\$22.00
1009	Diphenhydramine Antihistamine (Allergy Tablets)	24 ct	25 mg	\$6.50
1308	Diphenhydramine Antihistamine (Allergy Tablets)	100 ct	25 mg	\$6.50
2021	Diphenhydramine Antihistamine (Allergy Tablets)	400 ct	25 mg	\$16.50
1804	Fexofenadine (Allergy Tablets)	30 ct	180 mg	\$17.50
1946	Fluticasone Propionate (Allergy Nasal Spray, 24-hour)	144 sprays	50 mcg	\$26.25
2033	Loratadine (Allergy Tablets)	10 ct	10 mg	\$6.00
1611	Loratadine (Allergy Tablets)	100 ct	10 mg	\$17.50
2020	Loratadine (Allergy Tablets)	365 ct	10 mg	\$27.50
1881	Nasacort	60 sprays		\$26.25
1922	Nasal Decongestant Inhaler - Levmetamfetamine	0.007 oz	50 mg	\$8.75
1091	Nasal Decongestant Spray, 12-Hour	1 oz	0.05%	\$6.50
1052	Nasal Spray, Saline	1.5 oz	0.65%	\$6.00
2303	Zyrtec Tablet (14 ct)	14 ct	10 mg	\$26.25
2302	Zyrtec Tablet (90 ct)	90 ct	10 mg	\$53.50
<b>Antacids &amp; Acid Reducers</b>				
1313	Alka-Seltzer	36 ct		\$12.00
1006	Antacid / Anti-Gas Liquid	12 oz		\$8.25
1346	Antacid Chewable	150 ct	500 mg	\$7.75
1314	Effervescent Antacid & Pain Relief	36 ct		\$7.75
1949	Esomeprazole Magnesium (Acid Reducer, Delayed Release) *	42 ct	20 mg	\$25.25
1108	Famotidine (Acid Reducer)	30 ct	10 mg	\$8.25
1970	Omeprazole (Acid Reducer, Delayed Release)*	42 ct	20 mg	\$27.50
1966	Omeprazole (Acid Reducer, Delayed Release, Dissolvable)*	42 ct	20 mg	\$27.50
1800	Simethicone (Gas Relief)	100 ct	80 mg	\$8.75
2019	TUMS Ultra Strength	72 ct	1,000 mg	\$11.00

Item#	Product Description	Packaging	Strength	Price
<b>Anticandidal (yeast)</b>				
1115	Clotrimazole (Vaginal Antifungal 7-Day Cream with Applicator)	45 gm	1%	\$11.00
1117	Miconazole (Vaginal Antifungal 3-Day Cream with Applicator)	1 kit	2%	\$17.50
1119	Tioconazole (Vaginal Antifungal 1-Day Cream with Applicator)	1 ct	6.5%	\$20.75
<b>Anti-diarrheal, Laxatives &amp; Digestive Health</b>				
1316	Beano	30 ct		\$9.75
1128	Bisacodyl (Stimulant Laxative, Enteric Coated)	100 ct	5 mg	\$7.00
1969	ClearLax Unflavored Powder Laxative	8.3 oz	17 g	\$14.25
1126	Docusate Sodium (Stool Softener)	100 ct	100 mg	\$8.75
1130	Docusate Sodium plus Sennosides (Natural Vegetable Laxative)	60 ct	8.6 mg / 50 mg	\$7.75
1733	Enema	4.5 oz		\$6.00
1124	Ex-Lax	8 ct	15 mg	\$8.75
1155	Fiber Tablets ‡	60 ct	500 mg	\$11.00
1125	Glycerin Suppository Laxative	25 ct	2 gm	\$7.75
1067	Lactase Capsules	60 ct	3,000 FCC Units	\$10.75
1133	Loperamide HCL (Anti-Diarrheal Tablets)*	12 ct	2 mg	\$6.50
1889	Magnesium Citrate (Saline Laxative, Lemon)	10 oz		\$6.50
1011	Milk of Magnesia	12 oz	1,200 mg	\$7.00
1317	Pepto-Bismol Cherry	12 oz	525 mg / 30 ml	\$12.00
1045	Pink Bismuth Chewable Tablets	30 ct	262 mg	\$6.50
1318	Pink Bismuth Liquid	8 oz	525 mg / 30 ml	\$7.75
1047	Clotrimazole (Athlete's Foot Cream)	1.5 oz	1%	\$10.50
1135	Miconazole Nitrate (Anti-fungal Cream)	1 oz	2%	\$9.75
1874	Miconazole Nitrate (Athlete's Foot Spray)	4.6 oz	2%	\$11.50
2305	Nail Restore Fungal Formula	0.34 oz		\$19.00
1046	Terbinafine HCL (Athlete's Foot Cream)	0.5 oz	1%	\$12.50
1064	Tolnaftate (Anti-fungal Cream)	1.25 oz	1%	\$7.75
<b>Baby First Year</b>				
2299	Baby Petroleum Jelly	6.0 oz		\$ 2.00
2298	Diaper Rash Cream	4.5 oz		\$2.00
2212	Graduated Medicine Spoons	1 ea		\$7.25

\*Under certain circumstances these items may be covered under either Part B or Part D. When an item is covered by Part B or D due to particular circumstances, you would not use your OTC benefit to obtain this item because it is Medicare-covered in those circumstances.

‡ Dual-purpose items are medicines and products that can be used for either a medical condition or for general health and well-being. These items may be purchased only after discussing the purchase with your personal provider (or satisfying other requirements your plan may specify).

Item#	Product Description	Packaging	Strength	Price
<b>Bathroom &amp; Safety</b>				
2306	Antimicrobial Suction Cup Grab Bar, Chrome, 12in	1 ea		\$19.75
2307	Antimicrobial Suction Cup Grab Bar, Chrome, 16in	1 ea		\$26.25
2310	Bath Seat Cushion	1 ea		\$23.75
2309	Chair Shower Transport	1 ea		\$109.00
2308	Toilet Seat Cushion Vinyl	1 ea		\$15.75
<b>Bathroom Safety &amp; Fall Prevention</b>				
1464	Bed Rails	1 ct		\$63.75
1764	Adjustable Transfer Bench	1 ct		\$83.50
1728	Bath Bench with Back	1 ct		\$57.75
1727	Bath Bench without Back	1 ct		\$49.25
1459	Bath Mat, Non-Skid	1 ct		\$16.50
1730	Bath Tub Safety Rail	1 ct		\$41.50
2009	Bed Assist Bar	1 ct		\$60.25
2007	Handheld Shower Head	1 ct		\$27.50
1798	Knurled Chrome Grab Bar - 12"	1 ct		\$20.75
1797	Knurled Chrome Grab Bar - 24"	1 ct		\$24.00
2005	Knurled Chrome Grab Bar - 32"	1 ct		\$39.50
1983	Nightlight	2 ct		\$16.50
1729	Raised Toilet Seat	1 ct		\$38.25
1950	Raised Toilet Seat with Arms	1 ct		\$71.50
1780	Safety Treads, Tub & Stair	1 pack		\$9.75
1460	Shower Mat, Non-Skid	1 ct		\$19.25
1779	Toilet Safety Rails	1 set		\$43.75
2008	Treaded Slipper Socks, One Size Fits Most	1 pair		\$7.75
<b>Cold &amp; Flu</b>				
1360	Cepacol Sore Throat Lozenges	16 ct	7.5%, 5 mg	\$8.75
1166	Cough & Cold for High Blood Pressure	16 ct	4mg/30mg	\$7.75
1056	Cough Drops, Cherry	30 ct	5.8 mg	\$3.25
1999	Cough Drops, Cherry	80 ct	5.8 mg	\$6.25
1833	Cough Drops, Honey Lemon	30 ct	7.5 mg	\$3.25
1834	Cough Drops, Menthol	30 ct	5.4 mg	\$3.25
1182	Cough Drops, Sugar Free, Cherry	25 ct	5.8 mg	\$4.50
1054	Cough Syrup, Expectorant	4 oz	200 mg / 10 ml	\$6.50
1323	Diabetic Tussin DM	4 oz	20 mg/200 mg	\$10.50
1180	Guaifenesin (Cough Expectorant)	100 ct	200 mg	\$11.00
2059	Halls Mentho-Lyptus Drops	30 ct		\$6.50

Item#	Product Description	Packaging	Strength	Price
2063	Mucinex	20 ct	600 mg	\$19.75
1178	Mucus Relief DM Expectorant & Cough Suppressant (Guaifenesin 400 mg / Dextromethorphan HBr 20 mg)	30 ct	400 mg / 20 mg	\$11.00
1965	Mucus Relief DM Expectorant & Cough Suppressant, Extended Release	14 ct	1,200 mg / 60 mg	\$16.50
1357	Multi-Symptom Cold Formula	24 ct	10 mg / 5 mg / 325 mg	\$8.75
1931	Nasal Rinse Kit, Saline	1 kit		\$19.75
1792	Personal Steam Inhaler	1 ct		\$52.50
1352	Phenylephrine HCL (Nasal Decongestant PE)	36 ct	10 mg	\$7.75
1176	Sore Throat Lozenges, Cherry	18 ct		\$5.50
1904	Sore Throat Spray, Cherry	6 oz	1.4%	\$7.75
2061	Tylenol Cold & Flu	24 ct		\$13.25
1164	Vapor Rub	4.0 oz	4.8% / 1.2%	\$7.75
<b>Cold Sore &amp; Medicated Lip Products</b>				
1152	Abreva	2 gm	10%	\$ 6.25
1256	Blistex Lip Ointment	6 gm		\$5.50
1255	Carmex	7.5 gm		\$4.50
1153	Herpecin-L Lip Balm	0.1 oz	1%	\$9.75
1359	Releev Cold Sore Treatment	6 ml	0.13%	\$24.75
<b>Dental &amp; Denture Care</b>				
2312	Antiseptic Rinse	250 ml		\$5.00
1817	Biotene Dry Mouth Oral Rinse	16 oz		\$14.25
1818	Biotene Dry Mouth Spray	1.5 oz		\$12.50
1749	Dental Travel Kit	1 ct		\$11.00
1747	Denture Brush	1 ct		\$6.50
1032	Denture Cleaning Tablets	40 ct		\$6.50
1653	Efferdent Plus Mint Tablets	44 ct		\$9.75
1842	Effergrip Denture Cream Adhesive	1.5 oz		\$7.75
1843	Effergrip Denture Cream Adhesive	2.5 oz		\$9.75
1745	Fingertip Tooth & Gum Massager	1 ct		\$9.75
1187	Fixodent	0.75 oz		\$7.00
1751	Interdental Flossups	90 ct		\$6.00
1748	Interdental Gum Brushes	10 ct		\$6.50
2311	Listerine Original	1 L		\$10.25
1454	Orajel Pain Relief	0.25 oz	20%	\$12.00
2161	Oral B Replacement Brush heads 3 CT	3 ct		\$37.25
1750	Oral Care System Kit	1 ct		\$13.75
1286	Oral Pain Relief	0.5 oz	20%	\$7.75
1324	Polident Denture Cream	3.9 oz		\$9.75

\*Under certain circumstances these items may be covered under either Part B or Part D. When an item is covered by Part B or D due to particular circumstances, you would not use your OTC benefit to obtain this item because it is Medicare-covered in those circumstances.

‡ Dual-purpose items are medicines and products that can be used for either a medical condition or for general health and well-being. These items may be purchased only after discussing the purchase with your personal provider (or satisfying other requirements your plan may specify).

Item#	Product Description	Packaging	Strength	Price
1892	Polident Overnight	84 ct		\$13.25
1901	Reach Waxed Dental Floss - Cinnamon	55 yd		\$4.50
1455	Reach Waxed Dental Floss - Mint	55 yd		\$4.50
1902	Reach Waxed Dental Floss - Unflavored	55 yd		\$4.50
2038	Sea-Bond Denture Adhesive Wafers, Lowers	15 ct		\$8.75
2039	Sea-Bond Denture Adhesive Wafers, Uppers	15 ct		\$8.75
2015	Toothbrush, Battery Powered	1 ct		\$22.00
1830	Toothbrush, Colgate, Adult Medium	1 ct		\$3.25
1413	Toothbrush, Colgate, Adult Soft	1 ct		\$3.25
1450	Toothbrush, Rechargeable	1 ct		\$40.50
1948	Toothbrush, Soft 2-pack	2 ct		\$6.50
1412	Toothbrush, Tek Pro, Angled Soft	1 ct		\$1.00
1831	Toothpaste, Colgate	4 oz		\$6.50
1838	Toothpaste, Crest Sensi-Relief	4.1 oz		\$9.75
1914	Toothpaste, Fluoride	6.4 oz		\$6.50
1414	Toothpaste, Pepsodent	5.5 oz		\$4.50
1903	Toothpaste, Sensitive Teeth	4.3 oz		\$6.50
1716	Toothpaste, Ultrabrite Advanced Whitening	6 oz		\$6.50
1744	Water Jet	1 ct		\$49.25
1743	Water Jet Replacement Tips	5 ct		\$18.50
<b>Diabetes Care</b>				
1839	Diabetic Skin Relief Foot Cream	3.4 oz		\$13.25
1956	Diabetic Socks, Black, Medium 3-pack	3 pair		\$9.75
1957	Diabetic Socks, Black, Large 3-pack	3 pair		\$9.75
1958	Diabetic Socks, Black, X-Large 3-pack	3 pair		\$9.75
1953	Diabetic Socks, White, Medium 3-pack	3 pair		\$9.75
1954	Diabetic Socks, White, Large 3-pack	3 pair		\$9.75
1955	Diabetic Socks, White, X-Large 3-pack	3 pair		\$9.75
2315	Glucose Gummies Mixed Fruit Flavor	60 ct		\$10.00
1997	Glucose Tablets	50 ct		\$10.50
1959	Ultra Soft Padded Diabetic Sock, Black, Medium 2-pack	2 pair		\$12.00
1960	Ultra Soft Padded Diabetic Sock, Black, Large 2-pack	2 pair		\$12.00
1961	Ultra Soft Padded Diabetic Sock, Black, X-Large 2-pack	2 pair		\$12.00
1962	Ultra Soft Padded Diabetic Sock, White, Medium 2-pack	2 pair		\$12.00
1963	Ultra Soft Padded Diabetic Sock, White, Large 2-pack	2 pair		\$12.00
1964	Ultra Soft Padded Diabetic Sock, White, X-Large 2-pack	2 pair		\$12.00

Item#	Product Description	Packaging	Strength	Price
2314	Vivi Cap Insulin Temperature Shield	1 ea		\$126.00
2320	Zero Sugar Biotin‡	60 ct	5000 mcg	\$14.00
2316	Zero Sugar Diabetic Multivitamin‡	60 ct		\$14.00
2317	Zero Sugar Probiotic	60 ct		\$14.00
2318	Zero Sugar Vitamin C‡	60 ct		\$14.00
2319	Zero Sugar Vitamin D‡	60 ct	125 mcg	\$14.00
<b>Diagnostics</b>				
1982	Activity Tracker	1 ct		\$49.25
1935	Bathroom Scale ‡	1 ct		\$49.25
1981	Bathroom Scale, Talking ‡	1 ct		\$62.50
1253	Blood Pressure Monitor, Desktop Automatic ‡	1 ct		\$43.75
1503	Blood Pressure Monitor, Desktop Talking ‡	1 ct		\$49.25
1501	Blood Pressure Monitor, Wrist ‡	1 ct		\$32.75
1502	Blood Pressure Monitor, Wrist Talking ‡	1 ct		\$38.25
2163	Covid-19 At Home Test Kit‡	2 ct		\$33.00
1504	Desktop Blood Pressure Monitor Replacement Cuff ‡	1 ct		\$16.50
1416	EZ Detect Colon Cancer Test Kit ‡	1 ct		\$18.50
1794	Fever Strip Thermometer	1 ct		\$8.75
1505	Finger Pulse Oximeter ‡	1 ct		\$35.00
1771	Heart Rate Monitor Watch ‡	1 ct		\$43.75
1752	Thermometer Probe Covers	30 ct		\$3.75
1063	Thermometer, Digital 60 seconds	1 ct		\$8.75
1285	Thermometer, Digital Ear	1 ct		\$32.75
1697	Thermometer, Flexible Tip, Digital 9 seconds	1 ct		\$14.25
1925	Thermometer, Talking Ear and Forehead	1 ct		\$49.25
2323	Vivi Epi Pen Temperature Shield	1 ea		\$136.50
<b>Eye &amp; Ear Care</b>				
1192	Artificial Tears Drops	0.5 oz		\$ 6.50
1194	Artificial Tears Ointment	3.5 gm		\$11.00
1199	Clear Eyes Eye Drops	0.2 oz		\$6.50
1742	Cotton Tipped Swabs	300 ct		\$6.00
1841	Ear Pain Relief Ear Drops	10 ml		\$14.25
1190	Ear Wax Removal Drops	15 ml	6.5%	\$7.75
1363	Ear Wax Removal System with Rubber Bulb	15 ml	6.5%	\$9.75
1516	Eye Patches	1 ea		\$9.75
1806	Irritation Relief Eye Drops	15 ml		\$9.75
1468	Multi-Purpose Contact Lens Solution	12 oz		\$8.75
2324	Preservision AREDS 2 Vitamin & Mineral Supplement	90 ct		\$35.00
1061	Redness Relief Eye Drops	15 ml	0.05%	\$5.50

\*Under certain circumstances these items may be covered under either Part B or Part D. When an item is covered by Part B or D due to particular circumstances, you would not use your OTC benefit to obtain this item because it is Medicare-covered in those circumstances.

‡ Dual-purpose items are medicines and products that can be used for either a medical condition or for general health and well-being. These items may be purchased only after discussing the purchase with your personal provider (or satisfying other requirements your plan may specify).



Item#	Product Description	Packaging	Strength	Price
1905	Stye Eye Compress	1 ct		\$12.00
1906	Stye Eye Ointment	3.5 gm		\$12.50
1910	Swim-Ear Ear Drops	1 oz		\$8.25
<b>First Aid</b>				
2330	A & D Ointment	144 ct		\$ 17.00
1344	Adhesive Bandages	100 ct		\$6.50
1803	After Bite Relief	0.5 oz		\$11.00
1200	Alcohol Pads*	100 ct	70%	\$5.50
2004	Alcohol Pads*	200 ct	70%	\$7.75
1808	Antiseptic Skin Cleanser	8 oz		\$12.00
1201	Antiseptic Towelettes	100 ct		\$8.25
1020	Bacitracin Ointment	1 oz	500 u / gm	\$7.00
2331	Bacitracin Ointment	144 ct		\$20.00
1142	Bactine Solution	4 oz		\$11.00
2054	Band-Aid Comfort-Flex Plastic	60 ct		\$7.75
1676	Band-Aid Johnson & Johnson Gauze Pad - 2" x 2"	25 ct		\$7.75
1926	Burn Relief Spray	4.5 oz	0.5%	\$12.00
1144	Caldyphen Clear (Anti-Itch Lotion)	6 oz	1%	\$8.75
2042	Cast, Bandage and Wound Protector, Arm	2 ct		\$12.25
2043	Cast, Bandage and Wound Protector, Leg	2 ct		\$12.25
1223	Conforming Stretch Gauze Sterile Bandages - 3" x 4.1 yd	12 ct		\$8.75
1763	Cotton Balls	300 ct		\$5.00
1669	Cotton Tipped Applicator - 6"	1000 ct		\$12.50
1140	Diphenhydramine HCL / Zinc Acetate (Anti-Itch Cream)	1 oz		\$6.50
1890	Disposable Face Masks	10 ct		\$6.25
1207	Elastic Bandage - 2" x 4.5 yd	1 ct		\$6.50
1213	Elastic Bandage - 6" x 5 yd	1 ct		\$8.75
1947	First Aid Kit, 20 Pieces	1 ct		\$6.50
1215	First Aid Kit, 76 Pieces	1 ct		\$11.00
1738	First Aid Kit, 175 Pieces	1 ct		\$16.50
1062	Hot/Cold Pack, 1 small & 1 large	1 ct		\$9.75
1074	Hydrocortisone 1% Cream	1 oz	1%	\$6.50
1228	Hydrogen Peroxide	16 oz	3%	\$5.50
1867	Insect Repellent Spray - DEET	2 oz	30%	\$9.25
1796	Insect Repellent Spray - DEET	4 oz	30%	\$13.25
1868	Insect Repellent Spray - DEET	8 oz	30%	\$18.00
1203	Iodine Solution Antiseptic	4 oz	10%	\$8.25
1713	Isopropyl Alcohol	16 oz	70%	\$6.50

Item#	Product Description	Packaging	Strength	Price
1229	Isopropyl Alcohol, Wintergreen	16 oz	70%	\$7.00
1872	Liquid Bandage	0.61 oz		\$9.25
1326	Neosporin + Pain Relief	0.5 oz		\$11.00
1667	Nexcare clear waterproof bandages assorted sizes 50ct	50 ct		\$8.75
1840	Nitrile Exam Gloves (Large)	100 ct		\$22.00
2328	Nitrile Gloves (Small)	100 ea		\$22.00
2329	Nitrile Gloves (XL)	100 ea		\$22.00
2018	Petroleum Jelly	4 oz		\$7.75
1896	Procedural Face Masks with Earloops	50 ct		\$19.75
1217	Tape, Paper Surgical - 1" x 10 yd	1 ct		\$6.50
1219	Tape, Silk Surgical - 1" x 10 yd	1 ct		\$6.00
1221	Tape, Transparent Surgical - 1" x 10 yd	1 ct		\$6.00
1819	Tegaderm Transparent Dressing	8 ct		\$11.00
1014	Triple Antibiotic Ointment	1 oz		\$8.75
2332	Triple Antibiotic Ointment	144 ct		\$25.00
<b>Food &amp; Beverage</b>				
2279	Almond Milk, Sweetened Original	32 oz		\$5.00
2248	Angel Hair Pasta	16 oz		\$2.75
2277	Apple Sauce Multi-Pack (6 cups)	6 ct		\$3.25
2251	Baked Beans	16 oz		\$3.50
2268	Black Beans	15.5 oz		\$3.25
2267	Cheerios Cereal	8.9 oz		\$6.00
2287	Chicken Broth	14.5 oz		\$3.25
2288	Chicken Broth	49.5 oz		\$5.50
2289	Chicken Stock	32 oz		\$5.50
2272	Corn Flakes Cereal	18 oz		\$7.75
2266	Crunchy Granola Bar, Oats 'n Honey	12 ct		\$4.50
2252	Crushed Tomatoes	28 oz		\$2.50
2250	Cut Yams	29 oz		\$5.50
2249	Diced Tomatoes	14.5 oz		\$3.25
2283	Extra Long Grain Enriched Rice	2 lb		\$2.25
2244	Fettuccine Pasta	16 oz		\$2.75
2254	Fresh Cut Sliced Carrots	14.5 oz		\$3.25
2256	Fresh Cut Sweet Peas - 8.5 oz	8.5 oz		\$2.25
2259	Fresh Cut Whole New Potatoes	14.5 oz		\$3.25
2255	Fruit Cocktail in Heavy Syrup	8.5 oz		\$ 2.25
2269	Garbanzo Beans	15.5 oz		\$3.25
2242	Green Beans Cut	15.5 oz		\$3.25
2245	Linguine Pasta	16 oz		\$2.75

\*Under certain circumstances these items may be covered under either Part B or Part D. When an item is covered by Part B or D due to particular circumstances, you would not use your OTC benefit to obtain this item because it is Medicare-covered in those circumstances.

‡ Dual-purpose items are medicines and products that can be used for either a medical condition or for general health and well-being. These items may be purchased only after discussing the purchase with your personal provider (or satisfying other requirements your plan may specify).

Item#	Product Description	Packaging	Strength	Price
2282	Natural Brown Rice	2 lb		\$2.25
2276	Nutri-Grain Apple Cinnamon Cereal Bars	8 ct		\$6.50
2274	Nutri-Grain Variety Pack Snack Bars	8 ct		\$6.50
2281	Old Fashioned Oatmeal	42 oz		\$7.75
2280	Original Instant Oatmeal	10 ct		\$4.50
2278	Pam Sautee & Grill Spray	17 oz		\$7.00
2265	Pasta Ziti	16 oz		\$2.75
2257	Pear Halves in Heavy Syrup	29 oz		\$3.25
2263	Pineapple Slices in 100% Pineapple Juice	8 oz		\$2.25
2273	Raisin Bran Cereal	24 oz		\$7.00
2243	Ready Pasta	8.5 oz		\$2.75
2270	Red Kidney Beans	15 oz		\$3.75
2271	Rice Krispies Cereal	12 oz		\$5.50
2284	Salmon Red Sockeye	14.75 oz		\$8.75
2261	Sliced Beets	14.5 oz		\$3.00
2258	Sliced New Potatoes	14.5 oz		\$3.25
2260	Sliced Peaches in Heavy Syrup	8.5 oz		\$2.25
2247	Spaghetti Gluten Free Pasta	12 oz		\$4.75
2246	Spaghetti Pasta	16 oz		\$3.00
2275	Special K Cereal	18 oz		\$7.75
2285	Tuna Light in Water	2.6 oz		\$2.25
2290	Whole Grain Brown Rice	8 oz		\$3.25
<b>Foot Care</b>				
1784	Bunion Guard	1 ct		\$10.50
1238	Callus Remover Pads	6 ct		\$8.75
1236	Corn Remover Pads	9 ct		\$8.25
2335	Deodorant Foot Powder	6 oz		\$9.00
2388	Dr. Scholl's Float-On-Air Insole Men's	1 ea		\$19.75
2389	Dr. Scholl's Float-On-Air Insole Women's	1 ea		\$19.75
1785	Hammer Toe Crest	1 ct		\$12.00
1786	Lamb's Wool Padding	1 ct		\$7.75
1782	Moleskin Sheets Plus	4 ct		\$7.75
1788	Toe Protector, Small	1 ct		\$9.75
1787	Toe Protector, Large	1 ct		\$9.75
1783	Toe Separator	6 ct		\$8.75
<b>Hemorrhoidal Preparations</b>				
1066	Hemorrhoidal Ointment	2 oz		\$9.75
1247	Hemorrhoidal Suppository	12 ct		\$7.75
1364	Pre-moist Hemorrhoid Pads	100 ct		\$9.75
1248	Preparation H Cream	26 gm		\$13.25

Item#	Product Description	Packaging	Strength	Price
1895	Preparation H Medicated Wipes	48 ct		\$12.00
1098	Tucks Medicated Cooling Pads by Blistex	100 ct		\$15.25
<b>Home Aids</b>				
2351	Air Purifier	1 ea		\$189.00
2336	Aluminum Reacher with Magnetic Tip Non-Folding 32"	1 ea		\$8.75
2046	Button and Zipper Pull Aid	1 ct		\$15.25
2341	Cordless Water Flosser	1 ea		\$31.50
2037	CPAP Mask Wipes	72 ct		\$9.25
1836	CPAP Pillow Fiber Filled	1 ct		\$54.50
1837	CPAP Pillow Memory Foam	1 ct		\$42.75
1732	Cushion, Foam Ring	1 ct		\$24.00
1731	Cushion, Lumbar	1 ct		\$22.00
2340	Deluxe Pedal Exerciser	1 ea		\$59.75
2346	Exercise Resistance Bands	1 ea		\$5.25
2349	Foot Stool with Support Handle	1 ea		\$27.25
2130	Generic: Reading Glass Diopter +1.0	1 ct	1.0 diopter	\$8.75
2133	Generic: Reading Glass Diopter +1.25	1 ct	1.25 diopter	\$8.75
2136	Generic: Reading Glass Diopter +1.5	1 ct	1.50 diopter	\$8.75
2139	Generic: Reading Glass Diopter +1.75	1 ct	1.75 diopter	\$8.75
2142	Generic: Reading Glass Diopter +2.0	1 ct	2.00 diopter	\$8.75
2145	Generic: Reading Glass Diopter +2.25	1 ct	2.25 diopter	\$8.75
2148	Generic: Reading Glass Diopter +2.75	1 ct	2.75 diopter	\$8.75
2151	Generic: Reading Glass Diopter +3.0	1 ct	3.00 diopter	\$8.75
2154	Generic: Reading Glass Diopter +3.25	1 ct	3.25 diopter	\$8.75
2157	Generic: Reading Glass Diopter +3.5	1 ct	3.50 diopter	\$8.75
2160	Generic: Reading Glass Diopter +4.0	1 ct	4.00 diopter	\$8.75
2347	Hand Exercise Strengtheners	1 ea		\$7.50
1431	Hearing Aid Batteries (Size 10)	8 ct		\$8.75
1430	Hearing Aid Batteries (Size 13)	8 ct		\$8.75
1429	Hearing Aid Batteries (Size 312)	8 ct		\$8.75
1795	Humidifier, Ultra-Sonic Cool Mist	1 ct		\$63.50
1936	Hypoallergenic Pillow	1 ct		\$49.25
2343	Jar Opener for Seniors	3 ct		\$7.25
1756	Kitchen Scale, Dial ‡	1 ct		\$8.25
2016	Kitchen Scale, Digital ‡	1 ct		\$27.50
1875	Medical ID Bracelet - Blank	1 ct		\$17.50
1877	Medical ID Bracelet - Diabetic	1 ct		\$17.50
1876	Medical ID Bracelet - Heart	1 ct		\$17.50
2017	Medicine Bottle Opener with Magnifier	1 ct		\$11.00

\*Under certain circumstances these items may be covered under either Part B or Part D. When an item is covered by Part B or D due to particular circumstances, you would not use your OTC benefit to obtain this item because it is Medicare-covered in those circumstances.

‡ Dual-purpose items are medicines and products that can be used for either a medical condition or for general health and well-being. These items may be purchased only after discussing the purchase with your personal provider (or satisfying other requirements your plan may specify).



Item#	Product Description	Packaging	Strength	Price
2044	Oral Syringe	1 ct		\$1.00
1933	Pill Crusher with Storage	1 ct		\$11.00
1932	Pill Cutter with Safety Shield	1 ct		\$11.00
2337	Reacher Suction Cup 22"	1 ea		\$12.50
2338	Reacher Suction Cup 33"	1 ea		\$15.25
1799	Sharps Container, 1 gallon	1 ct		\$10.50
2339	Shoe Horn No Bend 24"	1 ea		\$11.00
2344	Stress Ball	1 ea		\$7.25
2350	Tray Walker Fold Away	1 ea		\$17.50
1934	Weekly AM/PM Pill Case	1 ct		\$11.00
1466	Wheelchair Cushion, Gel / Foam Seat	1 ct		\$32.75
2348	Wrist and Ankle Weights	1 ea		\$26.25
<b>Incontinence</b>				
2381	Discreet Men's Underwear, Small/Medium	20 ea		\$24.50
2382	Discreet Men's Underwear, Large/X-Large	18 ea		\$24.50
2383	Discreet Women's Underwear, Medium	20 ea		\$24.50
2385	Discreet Women's Underwear, Large	18 ea		\$24.50
2384	Discreet Women's Underwear, X-Large	16 ea		\$24.50
2380	Overnight Bladder Control Pads	30 ea		\$33.50
<b>Incontinence Supplies</b>				
1300	A & D Ointment	2 oz		\$ 7.75
1510	Adult Briefs, Small – 25" – 34" (Tabs)	24 ct		\$20.75
2026	Adult Briefs, Medium - 32" to 44" (Tabs)	24 ct		\$ 20.75
2027	Adult Briefs, Large - 44" to 58" (Tabs)	24 ct		\$22.00
2028	Adult Briefs, X-Large - 58" to 63" (Tabs)	20 ct		\$22.00
1811	Attends Discreet Men's Guard	20 ct		\$15.25
1812	Attends Discreet Women's Maximum Bladder Control Pad	20 ct		\$22.00
1815	Attends Discreet Women's Panty Liner	28 ct		\$9.75
1814	Attends Discreet Women's Ultimate Bladder Control Pad	20 ct		\$24.00
1302	Barrier Cream	4 oz		\$9.75
1479	Bladder Control Shaped Pad, Heavy Absorbency	20 ct		\$18.50
1480	Bladder Control Shaped Pad, Maximum Absorbency	20 ct		\$18.50
1021	Disposable Underwear, Medium - 34" to 44" (Pull-up)	20 ct		\$17.50
1026	Disposable Underwear, Large - 44" to 58" (Pull-up)	18 ct		\$ 17.50

Item#	Product Description	Packaging	Strength	Price
1027	Disposable Underwear, X-Large - 58" to 68" (Pull-up)	14 ct		\$17.50
1928	Flushable Wipes	24 ct		\$ 8.75
2000	Flushable Wipes	60 ct		\$13.25
1202	Lantiseptic Skin Protectant Ointment	4 oz	50%	\$13.25
2022	Perineal Wash Rinse-Free	8 oz		\$7.25
1993	Premier Adult Briefs, Medium - 32" to 44" (Tabs)	14 ct		\$32.75
1994	Premier Adult Briefs, Large - 44" to 58" (Tabs)	12 ct		\$32.75
1995	Premier Adult Briefs, X-Large - 58" to 63" (Tabs)	10 ct		\$32.75
1990	Premier Disposable Underwear, Medium - 36" to 44" (Pull-up)	18 ct		\$32.75
1991	Premier Disposable Underwear, Large - 44" to 58" (Pull-up)	16 ct		\$32.75
1992	Premier Disposable Underwear, X-Large - 56" to 68" (Pull-up)	14 ct		\$32.75
1477	Underpad, Disposable - 30" x 30"	10 ct		\$11.00
1996	Underpad, Extra Absorbent Air Permeable, 30" x 36"	5 ct		\$16.50
<b>Motion Sickness</b>				
1264	Bonine Adult 8's	8 ct	25 mg	\$8.75
1263	Dimenhydrinate (Motion Sickness Tablets)	12 ct	50 mg	\$7.75
1366	Meclizine HCL (Motion Sickness Caplets)	100 ct	12.5 mg	\$9.75
<b>Nutritional Supplements</b>				
2109	Beyond Fresh Amazing Shake	1.1 lb		\$ 4.00
2111	Beyond Fresh Vineyard Fresh Blend	6.3 oz		\$32.75
2100	BOOST Nutritional Supplement: Chocolate Shake 8oz each	24 ea		\$48.75
2101	BOOST Nutritional Supplement: Vanilla Shake 8oz each	24 ea		\$48.75
2116	Country Farms Apple Cider Vinegar Gummy	60 ct		\$15.25
2115	Country Farms Super Shake (chocolate)	12.4 oz		\$19.75
2104	Glucerna: Chocolate Shake 8oz each	6 ea		\$19.75
2102	Glucerna: Chocolate Shake 8oz each	24 ea		\$63.50
2105	Glucerna: Vanilla Shake 8oz each	6 ea		\$19.75
<b>Nutritional Supplements (cont'd)</b>				
2103	Glucerna: Vanilla Shake 8oz each	24 ea		\$63.50
2108	Keto Meal Shake - Chocolate	16 oz		\$25.25
2107	Keto Meal Shake - Vanilla	20 oz		\$25.25

\*Under certain circumstances these items may be covered under either Part B or Part D. When an item is covered by Part B or D due to particular circumstances, you would not use your OTC benefit to obtain this item because it is Medicare-covered in those circumstances.

‡ Dual-purpose items are medicines and products that can be used for either a medical condition or for general health and well-being. These items may be purchased only after discussing the purchase with your personal provider (or satisfying other requirements your plan may specify).

Item#	Product Description	Packaging	Strength	Price
<b>Pain Relief Aids</b>				
1809	Arthritis Hot Pain Relief Cream	3 oz	10%	\$8.75
1924	Aspercreme	1.25 oz		\$8.25
1944	Cold/Hot Menthol Medicated Patch	5 ct	5%	\$11.00
2355	Diclofenac Sodium Topical Gel	3.5 oz	1%	\$15.00
1845	Epsom Salt	4 lb		\$8.50
1846	Fast Freeze Pain Relief Spray	4 oz		\$14.75
2024	Heating Pad Digital, 12" x 15"*	1 ct		\$49.25
1943	Heating Pad Wrap For Shoulder, Neck, and Back, 25" x 26"*	1 ct		\$57.75
1861	Heating Pad, 12" x 15"*	1 ct		\$28.50
1942	Heating Pad, X-Large, 12" x 24"*	1 ct		\$38.25
1859	HeatWraps - Back & Hip	2 ct		\$12.00
1860	HeatWraps - Neck, Shoulder, & Wrist	3 ct		\$12.00
1761	Ice Bag - 9"	1 ct		\$9.75
1871	Lidocaine Patch	5 ct	4%	\$14.25
1923	Menthol Gel	8 oz	2%	\$9.75
1762	Pain Relief Mask	1 ct		\$8.75
1475	Pain Relieving Muscle Rub	2 oz	2.5%	\$6.50
1739	Salonpas Pain Relief Patches	6 ct		\$15.25
1912	Thermacare Lower Back & Hip	3 ct		\$16.50
1913	Thermacare Menstrual Relief	4 ct		\$16.50
1781	Warm or Cold Water Bottle, Rubber Latex	1 ct		\$11.00
<b>Pain Relievers &amp; Fever Reducers</b>				
2030	Acetaminophen (Pain Reliever, Extra Strength)	24 ct	500 mg	\$4.50
1105	Acetaminophen (Pain Reliever, Extra Strength)	50 ct	500 mg	\$6.25
1600	Acetaminophen (Pain Reliever, Extra Strength)	100 ct	500 mg	\$7.75
2002	Acetaminophen (Pain Reliever, Extra Strength)	500 ct	500 mg	\$16.50
1001	Acetaminophen (Pain Reliever, Regular Strength)	100 ct	325 mg	\$7.00
2050	Advil	100 ct	200 mg	\$16.50
1311	Arthritis Pain Reliever	100 ct	650 mg	\$13.25
1095	Aspirin	100 ct	325 mg	\$6.00
1096	Aspirin, Enteric Coated	100 ct	325 mg	\$6.50
1002	Aspirin, Enteric Coated, Low Dose	120 ct	81 mg	\$6.50
1998	Aspirin, Enteric Coated, Low Dose	500 ct	81 mg	\$13.25
1802	Aspirin, Low Dose, Chewable	36 ct	81 mg	\$6.00
1720	Bayer Back & Body Pain, Extra Strength	24 ct	500 mg / 32.5 mg	\$7.75
1367	Capsaicin (Pain Relief Cream)	2.1 oz	0.025%	\$10.50
2031	Ibuprofen (Pain Reliever / Fever Reducer)	24 ct	200 mg	\$4.50
1004	Ibuprofen (Pain Reliever / Fever Reducer)	100 ct	200 mg	\$8.75

Item#	Product Description	Packaging	Strength	Price
2001	Ibuprofen (Pain Reliever / Fever Reducer)	500 ct	200 mg	\$17.50
2032	Naproxen Sodium (Pain Reliever / Fever Reducer)	24 ct	220 mg	\$5.50
1041	Naproxen Sodium (Pain Reliever / Fever Reducer)	50 ct	220 mg	\$7.75
1097	Naproxen Sodium (Pain Reliever / Fever Reducer)	100 ct	220 mg	\$11.00
1365	Pain Reliever Plus (Acetaminophen 250mg / Aspirin 250 mg / Caffeine 65 mg)	100 ct	250 mg / 250 mg / 65 mg	\$8.75
1332	Pain Reliever, PM (Acetaminophen, Extra Strength / Diphenhydramine 25 mg)	100 ct	500 mg / 25 mg	\$9.75
2058	Tylenol Extra Strength	100 ct	500 mg	\$16.50
2051	Tylenol Regular Strength	100 ct	325 mg	\$13.75
2036	Urinary Pain Relief Tablets	40 ct	162 mg	\$12.00
<b>Pediculicide (Lice Treatment)</b>				
1929	Lice Elimination Kit	1 kit		\$31.75
1269	Lice Treatment Rinse (Permethrin)	59 ml	1%	\$17.50
1271	Lice Treatment Shampoo	4 oz		\$12.00
<b>Skin &amp; Sun Care</b>				
1076	Acne Gel 10% Benzoyl Peroxide	1.5 oz	10%	\$9.25
2356	Aveeno Daily Moisturizing Body Wash	18 oz		\$23.00
1821	Calamine Skin Protectant Lotion	6 oz		\$7.75
1065	Hand Sanitizer	8 oz		\$5.00
2358	Healing Ointment	3.75 oz		\$9.00
2357	Hydrocortisone Cream	144 ct	1%	\$23.00
2056	Oxy Daily Cleansing Pads Maximum	90 ct		\$9.75
1852	Scar Gel	0.7 oz		\$14.25
1908	Sunscreen Lotion SPF 30	1.5 oz		\$5.50
1284	Sunscreen Lotion SPF 30	4.0 oz		\$8.25
<b>Sleep Aids</b>				
2363	Melatonin Quick Dissolve Tablet	90 ct	10 mg	\$9.00
1725	Nasal Strips, Large	30 ct		\$14.25
1724	Nasal Strips, Medium	30 ct		\$14.25
2361	Natures Bounty Melatonin Softgel 5mg	90 ct	5 mg	\$12.00
2362	Sleep Aid	16 ct	25 mg	\$8.00
1276	Sleep Tablets	50 ct	25 mg	\$6.50
<b>Smoking Cessation</b>				
1372	Nicotine Gum ‡	50 ct	4 mg	\$27.50
1281	Nicotine Lozenges ‡	72 ct	4 mg	\$46.00
1369	Nicotine Patch, Step 1 ‡	14 ct	21 mg / 24 hr	\$38.25

\*Under certain circumstances these items may be covered under either Part B or Part D. When an item is covered by Part B or D due to particular circumstances, you would not use your OTC benefit to obtain this item because it is Medicare-covered in those circumstances.

‡ Dual-purpose items are medicines and products that can be used for either a medical condition or for general health and well-being. These items may be purchased only after discussing the purchase with your personal provider (or satisfying other requirements your plan may specify).



Item#	Product Description	Packaging	Strength	Price
1370	Nicotine Patch, Step 2 ‡	14 ct	14 mg / 24 hr	\$38.25
1371	Nicotine Patch, Step 3 ‡	14 ct	7 mg / 24 hr	\$38.25
<b>Supports &amp; Braces</b>				
1225	Ankle Support	2 ct		\$11.00
2041	Arm Sling	1 ct		\$15.25
1767	Arthritis Gloves, Small	1 pair		\$29.50
1766	Arthritis Gloves, Medium	1 pair		\$29.50
1765	Arthritis Gloves, Large	1 pair		\$29.50
2011	Arthritis Knee Sleeve, Small	1 ct		\$27.50
2012	Arthritis Knee Sleeve, Medium	1 ct		\$27.50
2013	Arthritis Knee Sleeve, Large	1 ct		\$27.50
2014	Arthritis Knee Sleeve, X-Large	1 ct		\$27.50
1487	Back Support Elastic - 24" to 46"	1 ct		\$25.25
1488	Back Support Elastic with Lumbar	1 ct		\$29.50
1770	Carpal Tunnel Brace, Small	1 ct		\$27.50
1769	Carpal Tunnel Brace, Medium	1 ct		\$27.50
1768	Carpal Tunnel Brace, Large	1 ct		\$27.50
1398	Compression Knee High Socks, Men's Black, Medium (Shoe Size 8 - 10) ‡	1 pair	15 - 20 mmHg	\$19.75
1399	Compression Knee High Socks, Men's Black, Large (Shoe Size 10.5 - 12) ‡	1 pair	15 - 20 mmHg	\$18.50
1400	Compression Knee High Socks, Men's White, Medium (Shoe Size 8 - 10) ‡	1 pair	15 - 20 mmHg	\$19.75
1401	Compression Knee High Socks, Men's White, Large (Shoe Size 10.5 - 12) ‡	1 pair	15 - 20 mmHg	\$19.75
1406	Compression Knee High Socks, Women's Beige, Small (Shoe Size 4 - 5)	1 pair	8 - 15 mmHg	\$19.75
1407	Compression Knee High Socks, Women's Beige, Medium (Shoe Size 5.5 - 7.5)	1 pair	8 - 15 mmHg	\$19.75
1408	Compression Knee High Socks, Women's Beige, Large (Shoe Size 8 - 10.5)	1 pair	8 - 15 mmHg	\$19.75
1410	Compression Knee High Socks, Women's Black, Medium (Shoe Size 5.5 - 7.5)	1 pair	8 - 15 mmHg	\$19.75
1409	Compression Knee High Socks, Women's Black, Small (Shoe Size 4-5)	1 pair	8 - 15 mmHg	\$19.75
1411	Compression Knee High Socks, Women's Black, Large (Shoe Size 8 - 10.5)	1 pair	8 - 15 mmHg	\$19.75
1760	Deluxe Criss Cross Back Support, Small - 28" to 32"	1 ct		\$26.25
1759	Deluxe Criss Cross Back Support, Medium - 33" to 37"	1 ct		\$26.25
1758	Deluxe Criss Cross Back Support, Large - 38" to 42"	1 ct		\$26.25

Item#	Product Description	Packaging	Strength	Price
1224	Elbow Support	1 ct		\$16.50
1774	Heel & Elbow Protector, Small	1 ct		\$13.25
1773	Heel & Elbow Protector, Medium	1 ct		\$13.25
1772	Heel & Elbow Protector, Large	1 ct		\$13.25
1775	Heel & Elbow Protector, X-Large	1 ct		\$13.25
1862	Hip Protector, Small	1 ct		\$37.25
1863	Hip Protector, Medium	1 ct		\$37.25
1864	Hip Protector, Large	1 ct		\$37.25
1865	Hip Protector, X-Large	1 ct		\$37.25
1465	Knee Stabilizer	1 ct		\$25.25
1481	Knee Support, Elastic, Small	1 ct		\$12.00
1482	Knee Support, Elastic, Medium	1 ct		\$12.00
1483	Knee Support, Elastic, Large	1 ct		\$12.00
1484	Knee Support, Elastic, Small with Stays	1 ct		\$20.75
1485	Knee Support, Elastic, Medium with Stays	1 ct		\$20.75
1486	Knee Support, Elastic, Large with Stays	1 ct		\$20.75
1463	Night Wrist Support	1 ct		\$32.75
1897	Protective Arm Sleeve - Small	1 pair		\$22.00
1898	Protective Arm Sleeve - Large	1 pair		\$26.50
1899	Protective Arm Sleeve - X-Large	1 pair		\$29.75
1457	Rib Belt - Female (one size fits most)	1 ct		\$20.75
1456	Rib Belt - Male (one size fits most)	1 ct		\$20.75
2040	Tennis Elbow Support	1 ct		\$12.50
1778	Thumb Brace	1 ct		\$19.75
1918	Wrist Compression - Small	1 ct		\$15.25
1919	Wrist Compression - Medium	1 ct		\$15.25
1920	Wrist Compression - Large	1 ct		\$15.25
1921	Wrist Compression - X-Large	1 ct		\$15.25
1230	Wrist Splint	1 ct		\$20.75
1227	Wrist Support	1 ct		\$11.00
<b>Vitamins &amp; Minerals</b>				
1805	Airborne Immune Support Chewable ‡	32 ct		\$17.50
2035	Beta Carotene ‡	100 ct	25,000 IU	\$10.75
1820	Biotin Gummy ‡	60 ct	2,500 mcg	\$14.25
1373	Calcium + Vitamin D3 ‡	60 ct	600 mg / 400 IU	\$7.75
1823	Calcium + Vitamin D3 Gummy ‡	60 ct	250 mg / 500 IU	\$14.25
1291	Calcium ‡	60 ct	600 mg	\$7.75
1945	Calcium Chew, Chocolate ‡	60 ct	500 mg / 1,000 IU	\$11.00
1420	Centrum Chewable Adult 50+ ‡	60 ct		\$19.75
1825	Chromium Picolinate ‡	100 ct	200 mcg	\$14.25

\*Under certain circumstances these items may be covered under either Part B or Part D. When an item is covered by Part B or D due to particular circumstances, you would not use your OTC benefit to obtain this item because it is Medicare-covered in those circumstances.

‡ Dual-purpose items are medicines and products that can be used for either a medical condition or for general health and well-being. These items may be purchased only after discussing the purchase with your personal provider (or satisfying other requirements your plan may specify).

Item#	Product Description	Packaging	Strength	Price
1827	Cod Liver Oil ‡	110 ct		\$9.50
1828	Coenzyme Q-10 ‡	30 ct	100 mg	\$15.25
1829	Coenzyme Q-10 ‡	30 ct	50 mg	\$13.25
1393	Daily Multivitamin ‡	100 ct		\$8.75
1972	Daily Multivitamin Gummy ‡	120 ct		\$14.25
1385	Daily Multivitamin with Minerals ‡	100 ct		\$9.25
1737	DHEA Hormonal Supplement ‡	50 ct	50 mg	\$13.25
1204	Digestive Advantage- Probiotic‡	30 ct		\$20.50
1417	Ferrous Gluconate (Iron Supplement) ‡	110 ct	27 mg	\$8.75
1376	Ferrous Sulfate (Iron Supplement) ‡	100 ct	325 mg	\$8.25
1741	Fish Oil, Soft Gels ‡	60 ct	1,000 mg	\$8.75
1849	Flaxseed ‡	100 ct	1,000 mg	\$12.00
1850	Folic Acid ‡	100 ct	800 mcg	\$7.00
1114	Glucosamine (Joint Health Support) ‡	60 ct	500 mg	\$12.00
1003	Glucosamine / Chondroitin (Joint Health Support) ‡	60 ct	250 mg / 200 mg	\$13.25
1975	Healthy Eyes with Lutein ‡	60 ct		\$9.75
1866	Immune Support Chewable ‡	50 ct		\$12.50
1869	Leg Cramps Pain Relief Caplets ‡	50 ct		\$15.25
1870	Leg Cramps Pain Relief Caplets ‡	100 ct		\$18.50
1418	Magnesium ‡	110 ct	250 mg	\$7.75
1879	Melatonin ‡	100 ct	5 mg	\$13.25
1971	Melatonin Gummy ‡	120 ct	2.5 mg	\$16.50
2075	Natural Beta Carotene ‡	100 ct	25,000 IU	\$13.25
2091	Natural Biotin ‡	60 ct	5,000 mcg	\$15.25
2076	Natural Cod Liver Oil ‡	100 ct		\$12.00
2092	Natural Coenzyme Q-10 ‡	45 ct	100 mg	\$19.75
2073	Natural Ferrous Gluconate (Iron Supplement) ‡	100 ct	27 mg	\$12.00
2093	Natural Folic Acid ‡	100 ct	800 mcg	\$9.75
2089	Natural Magnesium ‡	60 ct	482 mg	\$11.00
2094	Natural Melatonin ‡	60 ct	5 mg	\$13.25
2095	Natural Niacin, No Flush ‡	30 ct	500 mg	\$13.25
2074	Natural Vitamin A ‡	100 ct	10,000 IU	\$11.50
2080	Natural Vitamin B-1 ‡	100 ct	100 mg	\$13.25
2081	Natural Vitamin B-6 ‡	100 ct	100 mg	\$12.00
2082	Natural Vitamin B-12 ‡	60 ct	500 mcg	\$11.00
2083	Natural Vitamin B-12, Sublingual ‡	60 ct	5,000 mcg	\$19.75
2079	Natural Vitamin B-Complex ‡	100 ct		\$11.00
2084	Natural Vitamin C ‡	100 ct	1,000 mg	\$15.25
2085	Natural Vitamin C with Rose Hips ‡	60 ct	1,500 mg	\$16.50

Item#	Product Description	Packaging	Strength	Price
2077	Natural Vitamin D3 ‡	100 ct	1,000 IU	\$11.00
2078	Natural Vitamin D3 ‡	60 ct	5,000 IU	\$13.25
2087	Natural Vitamin E, Soft Gels ‡	30 ct	1,000 IU	\$13.25
2086	Natural Vitamin E, Soft Gels ‡	90 ct	400 IU	\$13.25
2090	Natural Zinc ‡	100 ct	50 mg	\$11.00
1378	Niacin ‡	100 ct	100 mg	\$6.50
1394	Niacin ‡	100 ct	500 mg	\$11.00
1930	Niacin, No Flush ‡	60 ct	500 mg	\$13.25
1886	One Daily Men's Multivitamin ‡	100 ct		\$11.00
1887	One Daily Women's Multivitamin ‡	100 ct		\$1.00
1977	Potassium Gluconate ‡	100 ct	595 mg	\$6.50
1395	Rena-Vite ‡	100 ct		\$14.75
1392	Senior Multivitamin ‡	90 ct		\$11.00
1734	Stress Formula Tablets with Zinc ‡	60 ct		\$11.00
2234	Turmeric with Ginger and Black Pepper Gummy ‡	60 ct		\$13.25
1735	Vitafusion Fiber Weight Management ‡	90 ct		\$19.25
1379	Vitamin A ‡	100 ct	10,000 IU	\$8.75
1016	Vitamin B-1 ‡	100 ct	100 mg	\$8.25
1388	Vitamin B-6 ‡	100 ct	100 mg	\$8.75
1389	Vitamin B-12 ‡	100 ct	500 mcg	\$6.50
1381	Vitamin B-12 ‡	100 ct	1,000 mcg	\$12.00
1974	Vitamin B-12, Sublingual ‡	30 ct	5,000 mcg	\$11.00
1382	Vitamin B-Complex ‡	100 ct		\$8.75
1915	Vitamin B-Complex Gummy ‡	70 ct		\$13.25
1017	Vitamin C ‡	100 ct	500 mg	\$7.75
1706	Vitamin C ‡	110 ct	1,000 mg	\$12.00
1916	Vitamin C Gummy ‡	60 ct	125 mg	\$13.25
1383	Vitamin D3 ‡	100 ct	10 mcg	\$6.50
1390	Vitamin D3 ‡	100 ct	1,000 IU	\$9.75
1973	Vitamin D3 ‡	100 ct	5,000 IU	\$11.00
1978	Vitamin D3 Gummy ‡	120 ct	1,000 IU	\$14.25
1391	Vitamin E, Soft Gels ‡	100 ct	100 IU	\$6.50
1384	Vitamin E, Soft Gels ‡	110 ct	400 IU	\$11.00
1419	Zinc Chelated ‡	110 ct	50 mg	\$7.75
<b>Wart Remover</b>				
1288	Dr. Scholl's Wart Removal System	24 ct		\$16.50
1075	Wart Remover, Liquid	9 ml	17%	\$9.75

\*Under certain circumstances these items may be covered under either Part B or Part D. When an item is covered by Part B or D due to particular circumstances, you would not use your OTC benefit to obtain this item because it is Medicare-covered in those circumstances.

‡ Dual-purpose items are medicines and products that can be used for either a medical condition or for general health and well-being. These items may be purchased only after discussing the purchase with your personal provider (or satisfying other requirements your plan may specify).



**Step 1 - Complete your information below**

<b>Advantage Dollars card number</b>	<b>Date of birth</b>
_____	____ - ____ - _____
<b>First name</b>	<b>Last name and suffix</b>
_____	_____
<b>Street address</b>	<b>Apt/Suite #</b>
_____	_____
<b>City</b>	<b>State</b> <b>ZIP code</b>
_____	_____ - _____
<b>Daytime phone</b>	<b>Email (optional)</b>
_____	_____

**Step 2 - Product selection**

Item #	Product	Quantity	Unit price	Total
_____	_____	_____	\$ _____	\$ _____
_____	_____	_____	\$ _____	\$ _____
_____	_____	_____	\$ _____	\$ _____
_____	_____	_____	\$ _____	\$ _____
_____	_____	_____	\$ _____	\$ _____
_____	_____	_____	\$ _____	\$ _____
_____	_____	_____	\$ _____	\$ _____
_____	_____	_____	\$ _____	\$ _____
_____	_____	_____	\$ _____	\$ _____
_____	_____	_____	\$ _____	\$ _____

If your total order amount exceeds your current available benefit allowance, please include your credit card information in Step 3 to pay the remaining amount due.

Total    \$ \_\_\_\_\_

If your total order amount is less than your current available benefit allowance, you don't need to include additional payment information.

Sales tax (6% MI sales tax)    \$ \_\_\_\_\_

Total amount due    \$ \_\_\_\_\_

Amount exceeding allowance balance (if applicable)    \$ \_\_\_\_\_



### Step 3 - Payment information (if applicable)

You can pay any balance beyond your Advantage Dollars by credit or debit card. If you have a balance and do not submit payment for the remaining balance, there may be a delay in receiving your order and some of your items may be canceled.

To pay by credit or debit card, please fill out the following information:

Credit or debit card # \_\_\_\_\_

Expiration date (MM/YY) \_\_\_\_\_ Security code (CVV) \_\_\_\_\_

Cardholder first name \_\_\_\_\_ Cardholder last name \_\_\_\_\_

**Cardholder signature**

### Step 4 - Mail completed form

Send completed order form (with payment if applicable) to:

**OTC Servicing Center  
P.O. Box 526266  
Miami, FL 33152-9819**

If you place your order using this form, the total will be applied to the quarter we receive your form. For example, if you mail your order form June 29, and we receive it July 1, your order total will be applied to your third quarter benefit, not the second quarter.

**For questions call Convey at**

**1-855-856-7878**

from 8 a.m. to 11 p.m. Eastern time, Monday through Friday.

TTY users, call **711**.



## Notices

- The health information provided in the catalog is general in nature and isn't medical advice or a substitute for professional health care.
- Over-the-counter items are drugs and health-related products that don't need a prescription.
- The OTC allowance amount is \$25 to \$100 each quarter, depending on your plan. You'll need to pay the balance using another form of payment for any order that goes over your available allowance. Quarters begin January 1, April 1, July 1 and October 1. Unused amounts will carry forward into the next quarter. Any unspent allowance will not carry over to next calendar year.

You can check your account balance, order from online retailers, and find eligible items and participating retailers from your secure member account.

- To set up your account, go to [www.bcbsm.com/medicareotc](http://www.bcbsm.com/medicareotc) and click on Login in the upper right corner. Then, click Register Now at the bottom of the box and follow the instructions.
- Once your member account is set up, click on the *Health & Well-being* tab and then on *Advantage Dollars*. From this page, go directly to your Advantage Dollars OTC Network account.



*Convey is an independent company not associated with the Blue Cross and Blue Shield Association. The OTC Network is a registered trademark of InComm, an independent company not associated with the Blue Cross and Blue Shield Association. Blue Cross Blue Shield of Michigan and Blue Care Network contract with InComm to administer the over-the-counter benefit to its Medicare Plus Blue PPO and BCN Advantage HMO-POS and HMO members.*

Blue Cross Blue Shield of Michigan and Blue Care Network are nonprofit corporations and independent licensees of the Blue Cross and Blue Shield Association.

The Blue Cross Blue Shield Association is an association of independent, locally operated Blue Cross and Blue Shield companies.