



# Request — and complete — your RightMed<sup>®</sup> Test

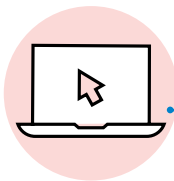
Did you know your genes play a role in how well you respond to certain medications? Your body may break down a medication too slowly or too quickly, which can cause harmful side effects, or no therapeutic effect at all.

**Blue Cross Personalized Medicine<sup>SM</sup>** uses the RightMed Test developed by OneOme<sup>®</sup> to help you and your health care providers understand how well your body may respond to certain medications.

**And there's no cost to you.**

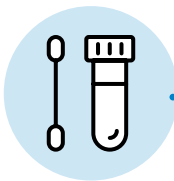
## Steps for taking the test

You'll first receive a notification from us letting you know you've been selected for the program. After you receive it:



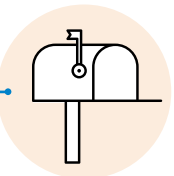
**Step 1:** Go to [www.myrightmed.com/bcbsm](http://www.myrightmed.com/bcbsm) and click *Request a test*.

**Step 2:** Register for OneOme's secured patient account. Enter your primary care provider's name and information.



**Step 3:** OneOme will mail you the test kit. Once you receive it, take a sample by swabbing your cheek. Be sure to use the instructions included with your test kit.

**Step 4:** Mail your sample to OneOme's lab using the pre-paid mailer provided. The mailing address will be included with your test kit. Your health care provider will need to authorize the test kit before the lab processes it.



**Step 5:** Log in to your registered patient account to receive a message letting you know your test results are ready to review.

OneOme shares your results only with you, your primary care provider or prescribing provider through OneOme's secured website. **Blue Care Network and your employer aren't involved in the test process and won't have access to your results.**

A pharmacogenomics pharmacist will review the test results and prepare a personalized clinical action plan. You and your health care provider will review the results and discuss whether a change in dosage or medication is right for you.

Take the test at [www.myrightmed.com/bcbsm](http://www.myrightmed.com/bcbsm) — and understand how well your body may respond to certain medications.

# About the OneOme RightMed Test:

Developed by our trusted partner OneOme, the RightMed Test is:

## Doctor-prescribed

## No cost

There's no cost to you if you're selected for our program.

## 99% accurate

## Highly confidential

Blue Care Network or your employer won't have access to your test results.\*

## Safe and secure

OneOme complies with all local, state and federal privacy laws.

\*Your test results won't affect your health care coverage.

Not sure if our program can benefit you?

Visit [www.myrightmed.com/bcbsm](http://www.myrightmed.com/bcbsm) for more information and talk with your doctor.



**BCN Advantage<sup>SM</sup> HMO**



Medicare and more

OneOme is an independent company supporting Blue Cross Blue Shield of Michigan and Blue Care Network by providing services related to genetic testing.

Blue Care Network is a nonprofit corporation and independent licensee of the Blue Cross and Blue Shield Association.